

A photograph of two young girls standing in a forest with fallen leaves on the ground. The girl on the left is wearing a light purple long-sleeved shirt and denim shorts, with her arm around the girl on the right. The girl on the right is wearing a green t-shirt and a reddish-brown skirt. The text "Meet the Teacher" is overlaid in white, with "September 2023" below it.

Meet the Teacher

September 2023

Have you seen our Parent Handbook for all the information you need?



TERM DATES

2023 – 2024

Autumn Term 2023

- Non Pupil Day: 4 September
- Start: 5 September
- Half Term: 23 – 27 October
- Non Pupil Day: 30 October
- End: 15 December

Spring Term 2024

- Bank Holiday: 1 January
- Non Pupil Day: 2 January
- Start: 3 January
- Half Term: 12 – 16 February
- Non Pupil Day: 19 February
- End: 28 March

Summer Term 2024

- Non Pupil Day: 15 April
- Start: 16 April
- Bank Holiday: 6 May
- Half Term: 27 May – 31 May
- End: 24 July

<https://dartington-lap.co.uk/parents/term-dates/>

SCHOOL:

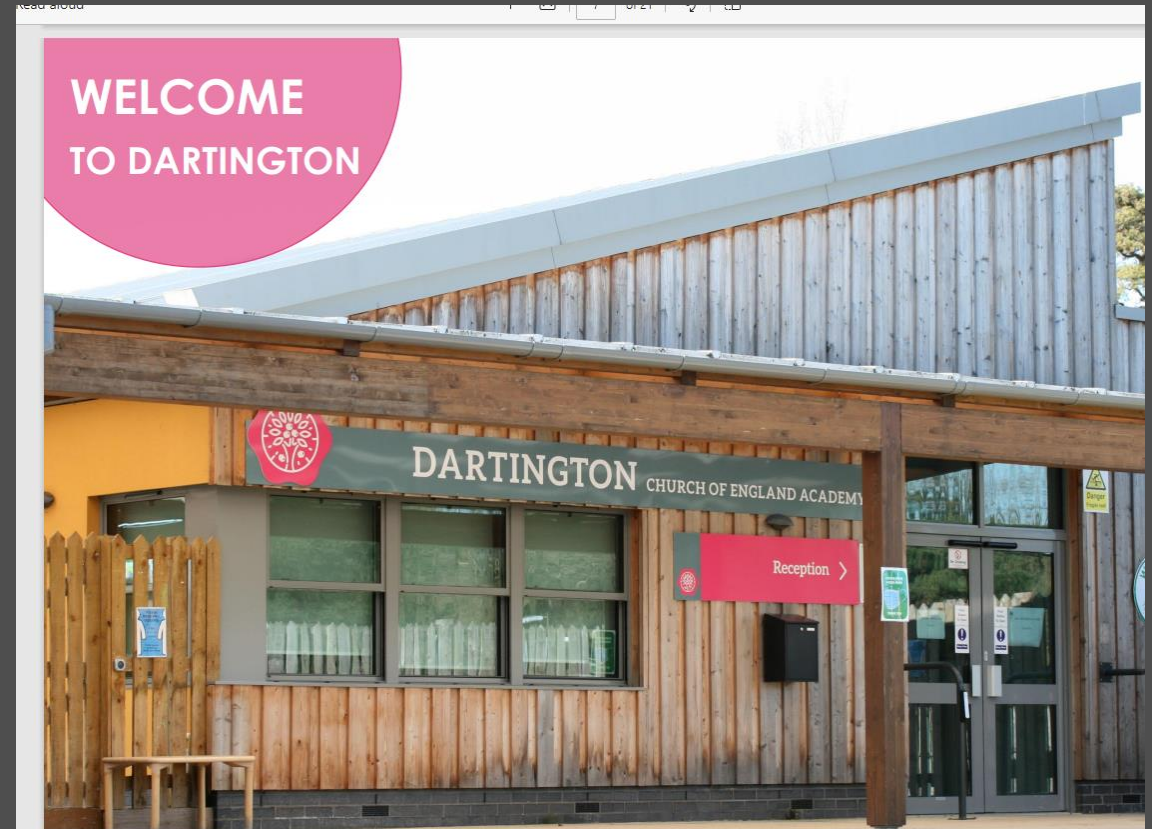
Start of the school day:

Gates open at 08:40 and children go straight to their class and the school day begins at 08:45. Registration closes at 09:00.

Children who miss all or part of the registration period can feel very unsettled and unsure about what is happening the rest of the day, so please make sure your child arrives at the school on time.

We ask that parents do not come into the classroom at drop off and collection. As well as being important from a safeguarding perspective, it also helps to build children's independence.

I am more than happy for you to agree with your child on a meeting place for collection at the end of day, so long as I am notified of this by you.



UNIFORM

We are a non-uniform school. Our drive to realising standards encompasses all aspects of school life; teaching & learning; relationships; behaviour and dress code. Wearing suitable clothing is essential. The support of parents is very important in this and it is vital that all clothing is clearly labelled.

Guidelines for School Dress and Appearance:

- Clothing and footwear must be clean, well fitted and in good repair.
- Outdoor wear, including coats, hats and fleeces, may only be worn outdoors.
- Clothing must be free of wording and prominent logos (small, discreet logos are acceptable).
- Trousers must be appropriate for sitting, playing and learning.
- Skirts and dresses should be of an appropriate length for sitting and playing.
- Cropped t-shirts and jumpers are not appropriate.
- Footwear must be appropriately fitted with good soles to enable the children to join in comfortably with the school day. Flip flops, crocs and wellington boots are not to be worn in the classroom.
- Jewellery must not be worn.
- Pupils may not attend school with visible nail varnish

All children must have an appropriate kit for sports and Forest School. These items may be kept in school in a bag on the child's peg so they are prepared each week. They will be sent home each half term to be washed.

Sports Kit:

- A navy Dartington PE shirt which can be ordered through Riviera Schooldays - [Classic Shop - Riviera Schooldays](#)
- Plain black or navy-blue shorts
- Sports trainers with suitable tread

Forest School Kit:

- Warm clothes (hats, scarf and gloves in colder weather).
- Water proofs (trousers and overcoat).
- Correctly fitting Wellington boots.
- A water bottle.

It is essential your child has a school book bag with them every day which can be ordered and paid for on the Riviera School Days website [Classic Shop - Riviera Schooldays](#)

Reading books and important information will be transported daily in this bag between home and school. If your child does not have a book bag you may miss out on some vital information and in some cases we will not be able to send books home without one.

Please make sure your child knows if there is something important to be handed in. Also please make sure someone at home checks the book bag as children cannot always be relied upon to remember that there may be important information in there.

KEY CONTACT DETAILS

Dartington Church of England Academy & Nursery
Shinners Bridge
Dartington
TQ9 6JU

- Tel: 01803 862357
- Email: dartington@lapsw.org
- Website: <https://dartington-lap.co.uk/>
- Twitter: <https://twitter.com/DartingtonLAP>
- Facebook: <https://www.facebook.com/DartingtonLAP>

Who will be in our classroom this year?



Miss Humphries

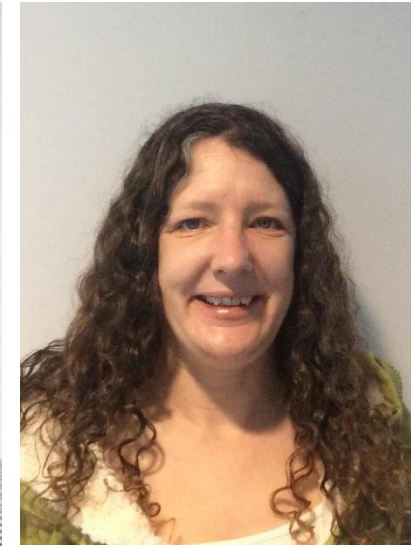
The only times I will not be in class teaching are Tuesday afternoon and Friday morning.



Mrs Sharp and Mrs Lilley will be based across year 5 and 6 and will be in supporting at different points of the day.



Mrs Palmer will cover on a Tuesday afternoon; teaching RHE and Music.



Mrs Wallis will cover on a Friday morning; taking the children to PE with Saints SW and then onto Forest School.



Mrs Matthews will potentially step in to cover in Mrs Wallis' or Mrs Palmer's absence, or if I need cover for a meeting.

Who can I contact if I have a question?

Please contact Miss Humphries in the first instance, via the school admin email or during drop off/collection.

The Admin team can help with any daily questions regarding lunches, letters, finance etc



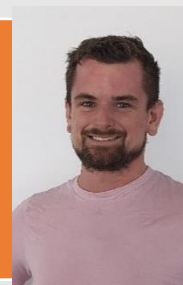
Mrs Strange can help with family support questions Mon – Wed dartingtonfamilysupport@lapsw.org

Mr T can help with SEND and safeguarding questions dartingtonsendco@lapsw.org



Mrs Eversfield AHOA KS1 and EYFS can help with any questions relating to these year groups

Mr Waters AHOA KS2 can help with any questions relating to these year groups



Mrs Huish, Mr Trewinnard and Mrs Strange are on the gate daily to take messages and quick questions.





How do I know what my child is learning?

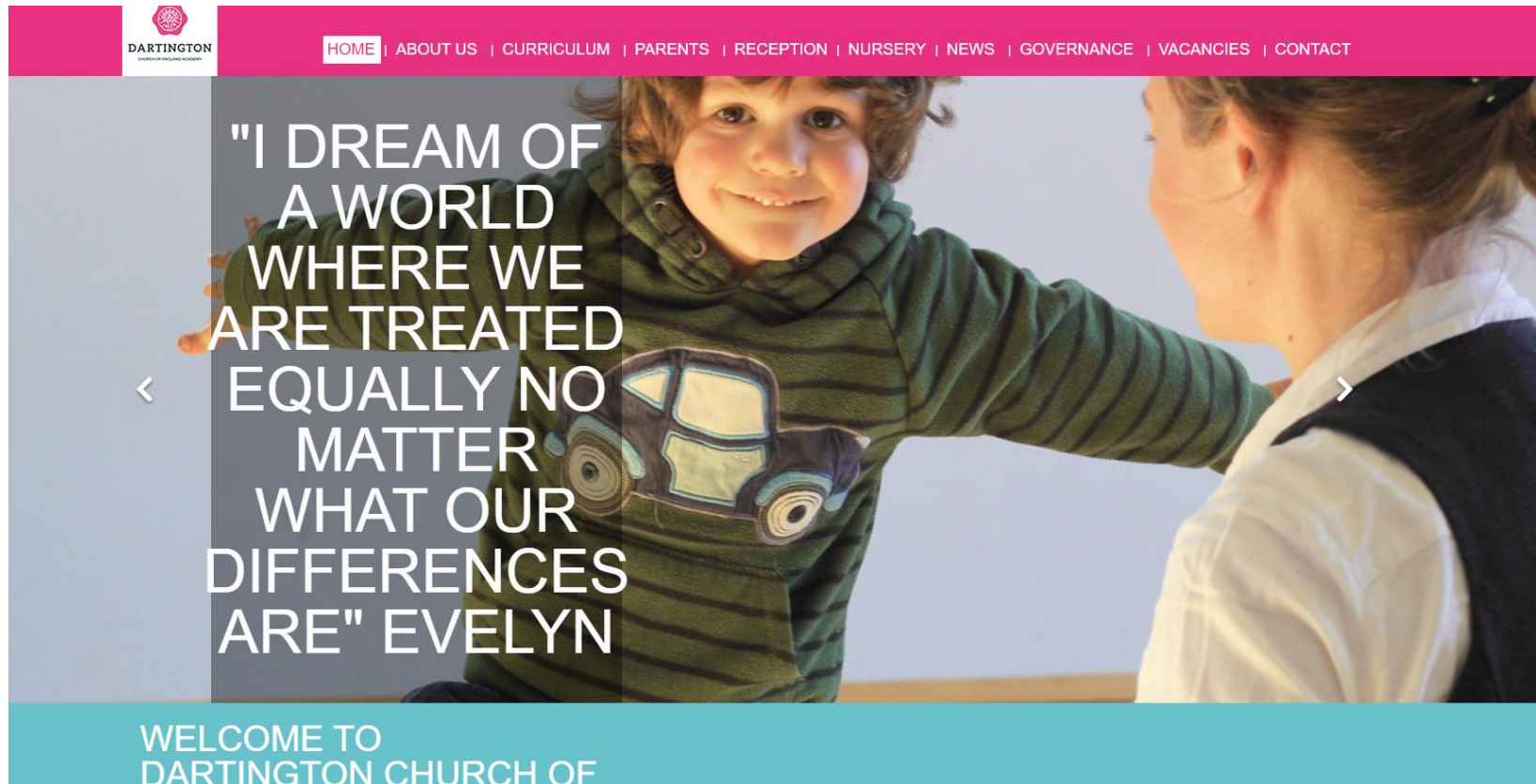
Autumn 1	Red Kites, Goldfinches and Swifts
Class Novel	This half term, Red Kites will be reading <i>The Boy in the Tower</i> by Polly Yu-Hen, Goldfinches novel is <i>Framed</i> by Frank Cottrell Boyce and Swifts will be reading <i>The Lion above the Door</i> by Onjali Q. Rauf.
Writing	To begin this half term, we will be working together to write a non-chronological report about emperor penguins. This will help us develop our understanding of how to use layout features such as headings, subheadings, and diagrams, as well as grammatical features such as rhetorical questions, semi colons and formal tone. The children will work towards writing their own reports about an animal of their choice. In the second part of the term, we will begin writing journals inspired by the Mars transmission.
Maths	This half term, all classes will begin a focus on place value, followed by a longer sequence covering all four main operations: addition, subtraction, multiplication and division. We will also continue our one fact per day, practicing the key times tables we need in order to support the above.
Science	This half term, we are learning about Properties and Materials. In this unit, we will be comparing and grouping items based on their properties, as well as classifying items considering if they are solid, liquid or gas. We will round the unit off by experimenting with soluble and insoluble materials.
RE	Our RE this half term has a focus on the question "What does it mean for Christians to believe that God is holy and loving?" In this unit, we will be looking at understanding the qualities of God, considering the terms "holy" and "loving" in relation to believing/nonbelieving individuals as well as looking at how music and symbols are used within their daily lives and church services.
Geography	In Geography this half term, we are exploring the water cycle. We will begin by defining its parts, and the journey a water droplet takes. As we continue through the unit, we will identify where our local rivers are, and what seas these feed into as part of the water cycle. We will end by exploring how the water cycle can affect our human and physical geography.
PE	We will begin our PE sessions this term with Gymnastics indoors, revisiting safe practice and creating simple routines with partners/small groups. Then in our outdoor sessions, we will all begin with multi-skills, with a focus on hand eye coordination and working collectively as a team. Swifts are also having biking sessions down at the track.
RHE	We will begin our RHE sessions by looking at "respecting ourselves and others". We will consider what a good role model looks like, as well as appreciating how we approach others around us, and what to do when we find ourselves in situations which may be tricky or uncomfortable, whilst still being respectful.
Forest School	Our forest school learning this half term will focus mainly on the harvest of our wonderful apples! We will be using these to create toffee apples, crab apple jelly and apple pressing. We will also have the opportunity to go river dipping and make damper bread.
Music	Our music focus for this half term is "Livin' on a prayer" by Bon Jovi. We will explore Rock music culture as well as learning the lyrics to the song, and playing sections of the music on glockenspiels, ready to create a class piece!
Art	This term our art focus is inspired by Martin Bush and creating abstract landscapes. He creates abstract paintings of a variety of objects and places; including Royal William Yard. We will be inspired by his work to create our own abstract pieces, using skills we have previously learnt such as colour mixing, to supplement the use of texture and different materials.
Computing	This half term, we are looking at systems and searching, which is going to really support our research in English. We will explore the terms input, process and output stages, as well as finding specific information online, explaining how searching online can be influenced and limited.
Modern Foreign Languages	In our MFL sessions, we are going to begin with a focus on school subjects. We will revisit some of the basic vocabulary that is used to say simple sentences and tie this in with learning the French terms for subjects we have every day/week!

Curriculum Booklets

These come home every half term and show you what your child is learning across all of their subjects that half term. A great piece of information to have on your fridge so you can ask questions about your child learned in their lessons that week!

The school website

All our curriculum overviews, curriculum intent, event dates and information for wider curriculum areas such as personal development can all be found on our school website for your information.





New Curriculum Open Classrooms!

This year, we will begin to add the additional open classroom events to our school year. There will be one every half term and the dates can be found in the school newsletter so you can plan ahead. These sessions will allow you to spend time in your child's classroom looking through their learning in books.

Termly Parents evenings and an annual report

- Every term, we hold parent consultations so you can have the opportunity to sit and discuss your child's progress with their class teacher. These can be booked on the MCAS app.
- The annual reports get emailed out at the end of the academic year with clear indications of your child's progress. The final parent evening appointments enable you to chat through the successes, including SATs results and next steps on their school journey.



How can I help at home?

01

Reading the newsletters to ensure your child has everything they need.

02

Communicating with us any changes at home for your child so we can support where we can.

03

Communicating any concerns that you have swiftly, so we can meet to discuss actions and support.

04

Completing the home learning to help your child to raise their confidence and fluency in their learning.



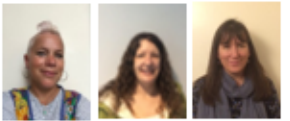
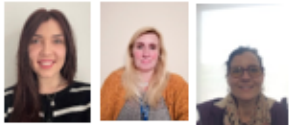
RED KITES

YEAR 6



TEACHERS/LSA's:

Miss Humphries,
Mrs Sharp, Mrs Lilley, Mrs
Palmer, Mrs Wallis and
Mrs Matthews



Star of the week!

Saira –

For setting such a fantastic example in your first week in Red Kites. I love how you show our values of compassion, creation and wisdom in everything you do.


Important messages for next week:

- PE will be on a Wednesday afternoon and Friday morning.
- Forest school is on a Friday.

Red Kites' Weekly Home Learning

Number Fluency	Writing Fluency	Reading Fluency
Arithmetic practice – 10 questions to complete at home. 6,000 x 6 = 210 x 1 = 1/8 + 4/8 = 42 ÷ 7 = 4,200 ÷ 10 = 5,403 x 5 = 900 – 236 = 613 + 9 + 5,318 = 38 x 1,000 = 1 – 0.3 =	Y5/6 Spellings from CEW lists accommodate accompany according achieve aggressive amateur ancient	Read your phonics/library book or something you enjoy each night (even if it is just a page!) Remember, we give certificates for every 10, 25, 50, and 75 books read. Once you reach 100, you will become a book ambassador!

Red Kites' Autumn 1 Home Learning Menu

Art	Geography	RE
Create an abstract landscape inspired by a place you "love to be in/visit." This could be: Your back garden The beach The local park The moors A national trust location	Can you create a cartoon strip of the water cycle? Imagine you are a drop of water, how will you travel through evaporation, condensation, precipitation, and collection?	Our question this half term is, "What does it mean for Christians to believe that God is holy and loving?" Christians feel that going to church, connects them to God. Can you create a stained-glass window drawing, that connects you to things you feel are important in your life?
Science	Across this term, children can complete the daily bite-size fluency learning and choose a minimum of 3 longer term projects to complete however they wish, from this selection, to share with classmates. You can choose to present them any way you like: video, PowerPoint, leaflet, poster, artwork etc. The more creative, the better!	PE
Can you find items in your home, and classify them in a table, based on properties such as: Hard, soft, transparent, opaque, bendy, rigid, waterproof.		Keeping ourselves fit and healthy means more than just exercise. Take a journal of your food this term and see how your foods rate on the eat healthy plate. Or ride to school etc.
Music	Reading For Pleasure	
Living' on a prayer – San Jovi, is our focus song. Can you create a poster about Rock music, with a section about who San Jovi are? You might find other bands in your research process, and feel free to include them too.	This half term, we love these books.  Why not visit the library in Totnes to see if they have a copy of any of them?	

New Home Learning Offer

Home learning requirements are not the same for every family or every child. This year, we are trialling a different approach where you will get a 'menu' each term. This details daily expectations to build confidence and fluency in spellings, reading and maths facts.

As well as this, it will have a menu to choose at least 3 projects for the term from across the curriculum.

What is happening in Year 5/6 that you need to know?

- PE days – Wednesday and Friday
- Forest school – Friday morning
- Lunchtime clubs are up and running; sports, calm club and gardening.
- In the next few weeks, year 6 will complete a practice round of papers, for me to use as a baseline, and for them to gain their first experience of what papers look like.
- 15th September – Bikeability catch up session for any year 6's who were absent or missed a session for other reasons. .
- 5th October – Census day and SATs parent workshop; 2.30-3.15pm.
- 12th October – Junior life skills at Totnes Leisure Centre AM (letter coming soon.) Curriculum open afternoon 2pm.
- 16th and 19th October – Parents evenings.